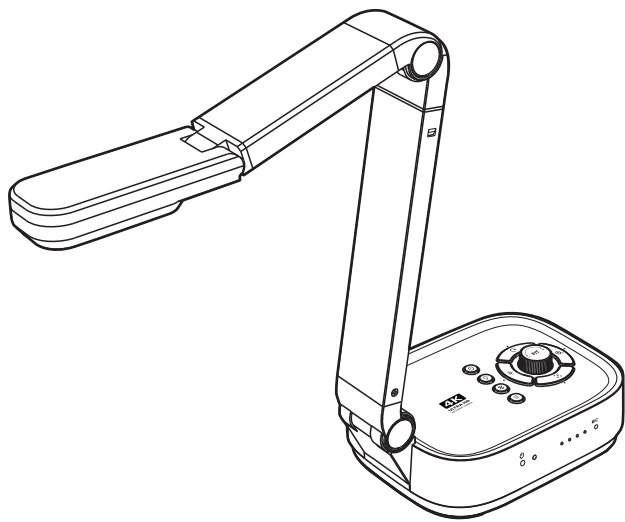


4K Document Camera  
Quick Start Guide



Please read this guide before using the product.

Step 1. Instructions

Thank you for purchasing this product. This product is a high-quality and easy-to-use and 4K Visualizer/Document Camera. With HDMI and USB plug-n-play connection, this product is a perfect device for use in the classroom and distance learning.This quick start guide briefly describes the steps to start using this document camera.

Limited Warranty

This product provides limited warranty continues for one (1) year from the date of purchase.

Warranty Exclusions

The following circumstances excluded from warranty coverage:

- Product damage caused by catastrophes, thunder stroke, faulty electric power, and environmental factors.
- Defacing of product labeling (label alterations and falsifying, serial number missing, serial number no longer discernible, serial number invalid). All serial numbers are recorded and tracked for warranty purposes.
- Unauthorized changes of non-parts, modifications or alterations, parts removal in or to the products.
- Damage caused by operator error or operator fails to comply user manual instruction, such as, but not limited to improper storage resulting in product get wet, corrosion, ell off, squeezed or exposed to inadequate temperature/humid environment.
- Accessories or packing material such as boxes, user manual, etc.

Safety & Environmental Information

- This device complies with part 15 of the FCC rules and CE certification.
- Discarded electrical and electronic appliances are recyclable and should separate from household waste. Please actively support in conserving resources and protecting the environment by returning this appliance to the collection centers.

System Requirements

Intel i5 Processor or Higher
USB Port
At least 4GB RMB (Recommended 8GB)
20GB Available HDD Space
Windows & Chrome Extension



Step 2. Specifications

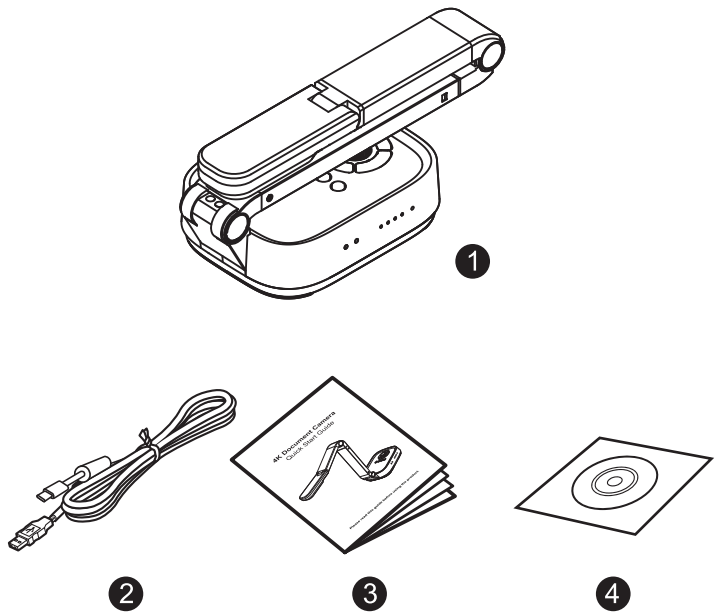
Image Sensor	1/3.06", 13 MP CMOS Sensor
F/NO (Infinite)	2.2
TV lines	1100
Max. Shooting Area	430mm x 320mm (17"x12.6")
Max. HDMI Output Resolution / FPS	3840×2160@30fps (4K, 16:9)
USB Output Resolution / FPS	4192×3104@10fps (13MP, 4:3)
	3840x2160@30fps (4K, 16:9)
	1920x1080@30fps (Full HD, 16:9)
	1280x720@30fps (HD, 16:9)
	1024x768@30fps (XGA, 4:3)
	640x360@30fps (VGA, 16:9)
Video Format	H.264 / MJPG / YUY2
Focus	Auto / Manual
Lamp	LED
Image Rotation	0° / 90° / 180° / 270° / Flip / Mirror
PTZ	Yes
Freeze	Yes
Power Frequency	50 / 60 Hz
Connectivity	USB (Type-C) / HDMI
Microphone	Built-in Omnidirectional Microphone
	1kHz(0dB=1V/Pa) Min-45 Nom-42 Max-39 dB
Powered By	USB Type-C (5V/1A)
Protocol	UVC / UAC Compliant
Soupport OS	Windows & Chrome Extension
Dimensions	Extended: 347x115x381 mm
	Closed: 242x115x87 mm
Net Weight	1.2Kg

NOTE: Specifications are subject to change without notice

Step 3. Unpacking

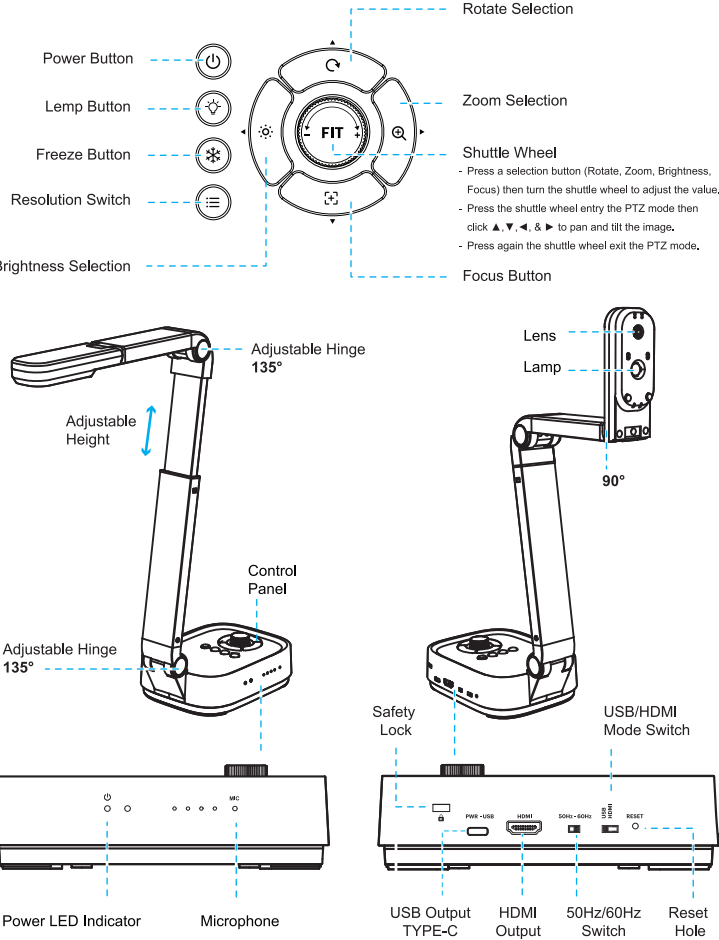
Before use, make sure the following items are included in the package.  
If anything is missing, contact the retailer where you purchased the product.

1. 4K Document Camera
2. USB Type-C Cable
3. Quick Start Guide
4. Software CD



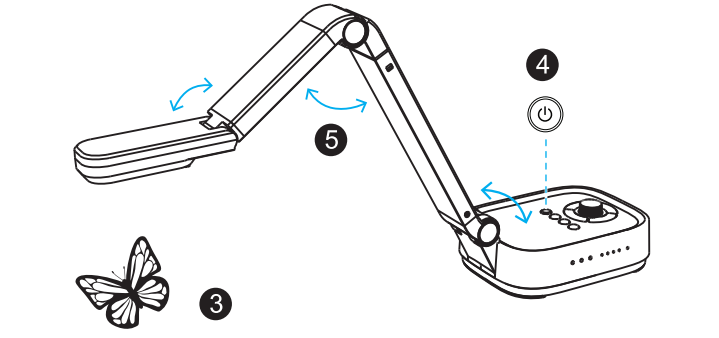
Step 4. Parts Descriptions

Control Panel



Step 5. Start Using

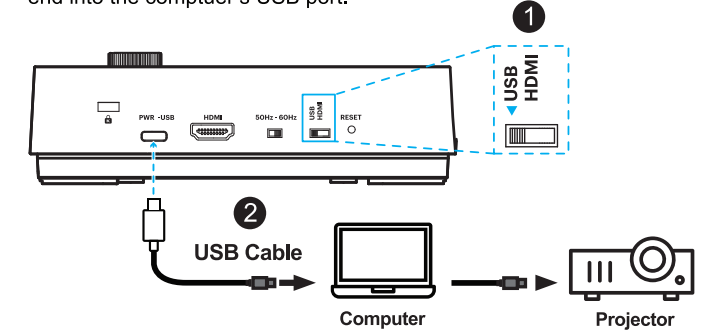
- 1.Start by lifting the camera head.
- 2.Press against the base plate of the device.
3. Place an object to be displayed under the camera.
4. Press the power button to turn on the power.
5. Adjust the arm to change the height and position for capturing your object.



Step 6. Connection Settings

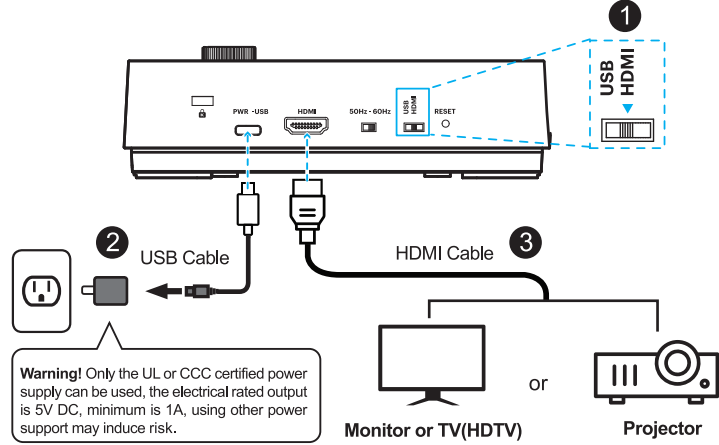
USB Mode Connection

1. Switch to the USB connection mode.
2. Plug the supplied USB type-C cable to this product and connect another end into the comptuer's USB port.



HDMI Mode Connection

1. Switch to the HDMI connection mode.
2. Plug the USB cable into the USB power adapter.
3. Connect to a projector, monitor or TV(HDTV).



Step 7. Warranty Information

<b>Warranty Card</b>	
<b>Product Name: 4K Document Camera</b>	
This product provides limited warranty continues for one (1) year from the date of purchase.	
<b>Name:</b>	<b>Email:</b>
<b>Address:</b>	
<b>Product S/N:</b>	
<b>Reseller Info.:</b>	
<b>Date of purchase:</b>	

Warranty Exclusions

The following circumstances excluded from warranty coverage:

- Product damage caused by catastrophes, thunder stroke, faulty electric power, and environmental factors.
- Defacing of product labeling (label alterations and falsifying, serial number missing, serial number no longer discernible, serial number invalid). All serial numbers are recorded and tracked for warranty purposes.
- Unauthorized changes of non-parts, modifications or alterations, parts removal in or to the products.
- Damage caused by operator error or operator fails to comply user manual instruction, such as, but not limited to improper storage resulting in product get wet, corrosion, ell off, squeezed or exposed to inadequate temperature/humid environment.
- Accessories or packing material such as boxes, user manual, etc.